

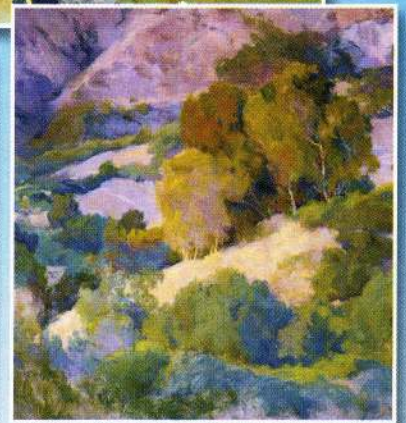
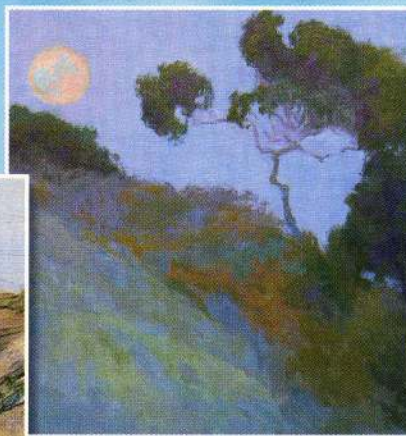
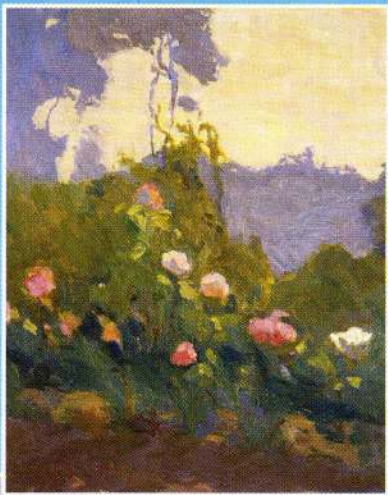
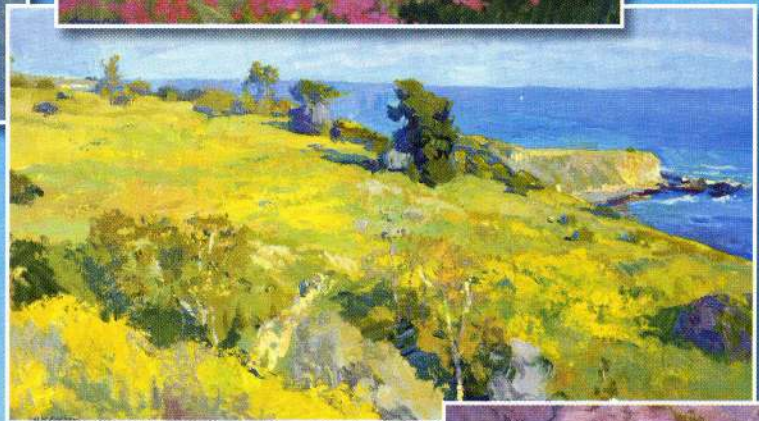
THE PENINSULA'S PREMIER MAGAZINE

PALOS VERDES

Style

JUNE/JULY 2005

Vol. 12, No. 3



WINNER'S CIRCLE - DON CROCKER
OPEN SPACES - THE PENINSULA AND BEYOND
SPIRIT OF ACHIEVEMENT - CATHERINE BANNERMAN, M.D.
HOME IMPROVEMENT - MODERN CONTEMPORARY

Open Spaces – The Peninsula and Beyond

By Lynne La Fleur

Saturday, June 25, 2005 heralds one of the most anticipated events of the year for the Palos Verdes Peninsula...and one of the most critical to the future of its open land.

The Palos Verdes Land Conservancy and the seven artists who comprise the Portuguese Bend Artist Colony – Stephen Mirich, Dan Pinkham, Vicki Pinkham, Amy Sidrane, Rick Humphrey, Tom Redfield and Kevin Prince – present “Open Spaces – The Peninsula and Beyond Fine Art Exhibit and Sale” at the Malaga Cove Library June 25th through July 30th, 2005.

With the sole emphasis of this exhibit being the rough and tumble hillsides of Portuguese Bend and its surrounding areas, each artist brings a unique vision of this fragile landscape in earnest. The window of opportunity to purchase these privately held lands, to protect and preserve this wild and open space for the future, is precariously small. To this purpose,

30% of all funds raised from the sale of these works of fine art benefit directly the Palos Verdes Land Conservancy with an additional 10% of sales to benefit the Palos Verdes Library.

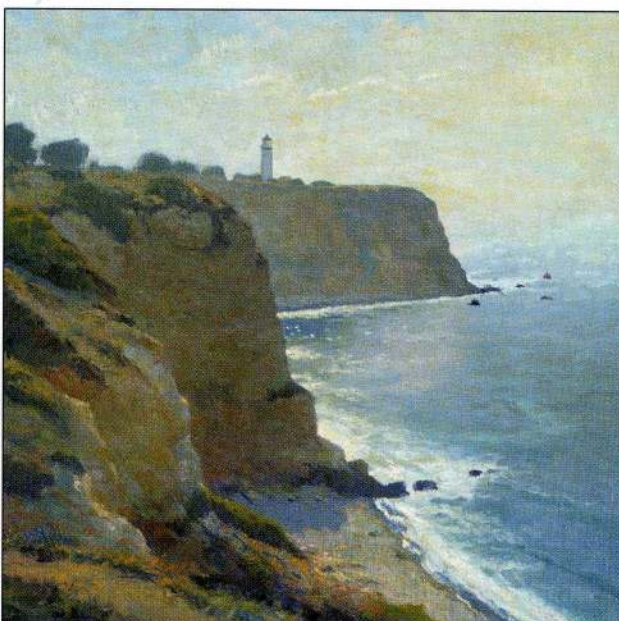
The first Fine Art Exhibit and Sale was organized in 1997, inspired by a chance meeting of two men of similar mind – Bill Ailor, President of the Palos Verdes Land Conservancy, and Plein Air artist Rick Humphrey. “I was leading a nature walk and Rick was painting on-location. We got to talking about the Land Conservancy and Rick volunteered to do a show with Dan and Amy. Eight years and the acquisition of 400 permanently protected acres of open space later, we’ve come to a critical stage. In the evolution of a community, there comes a defining moment. That moment is now for the Palos Verdes Peninsula.”



(L to R) Rick Humphrey, Dan and Vicki Pinkham, Tom Redfield, Stephen Mirich, Kevin Prince and Amy Sidrane.

If one painting stands out as the signature symbol of the Preservation Campaign, it is “Poetic Essentials” by Dan Pinkham, a resident of Portuguese Bend with his wife, fellow painter Vicki Pinkham. “One reason I wanted to document this image in paint is that this area is designated for development.”

Each of these “Seven” artists draws inspiration from the land with a particular discipline in the Plein Air



Richard Humphrey ~ “Sunlight and Fog, Point Vincente”
“We are creating a collection of paintings that will archive the open spaces of the Peninsula for the future generations. If these places are lost, our paintings will act as a visual record to show what the Hill was like at this time.”



Dan Pinkham ~ “Poetic Essentials”
“I am alarmed by how many people who use these trails for hiking, mountain biking and horseback riding are totally unaware that this is private property. They are, in effect, trespassing.”



Vicki Pinkham ~ "Coastal Roses"
"We must be informed and aware of how we can each make a difference. I think we must explore thoughtful and creative ideas. We must learn to live justly, wisely and artfully while we are here. I feel there is a tremendous benefit to all in keeping our community's natural and rural character intact. Our hope is to inspire, inform, protect and contribute in a significant way."

genre. Dan, Amy, Stephen, Tom and Rick grew up hiking all over the Hill. Dan and Amy studied with noted Russian Impressionist, Sergei Bongart. Stephen studied with artist Theodore Lukits (1897-1992). Tom Redfield is the great grandson of American Impressionist Edward Willis Redfield and carries on his independent spirit. A deep connection exists between these artists and the painting tradition



Stephen Mirich ~ "The Artists Feast"
"We all get together for painting dinners to share some of our experiences of Portuguese Bend knowing that painting could share the beauty of this landscape with everyone. Our camaraderie is essential for our purpose as painters."

of early 20th Century California artists with the revival of the California Art Club, founded in 1909 in Pasadena by artists Frank Liddell, Oscar Borg, Hanson Puthuff and William Wendt. Six of the "Seven" are members of CAC, two are on its Board of Directors.

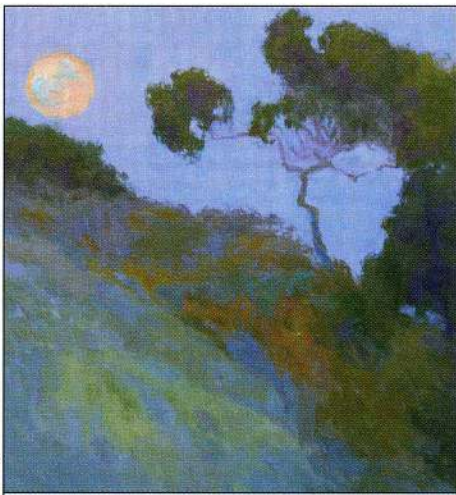
"Like the early French Impressionists whose fields and lands have become so much a part of how we see that part of the world, so this group, too, offers us a way to truly see the beauty of this coastal space – and calls our attention to its alarming vulnerability."

- from an essay on the Portuguese Artist Colony by Laura Leaney
 The Community Capital Campaign to Preserve Portuguese Bend has been established to raise \$6

million to ensure that the Portuguese Bend Nature Preserve becomes a reality. Saturday, June 25th from 12 noon to 3pm will definitely be an event not to be missed. The Portuguese Bend Artist Colony has been critically acclaimed by museum directors and art historians.



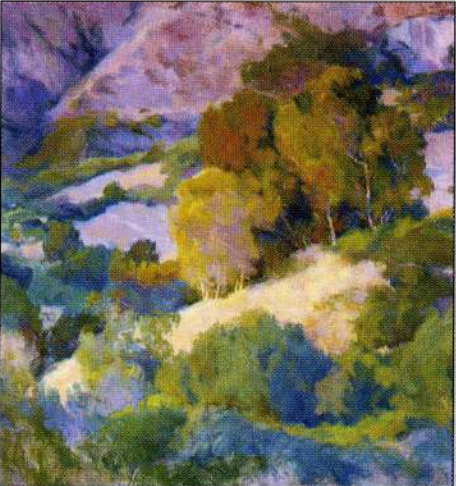
Tom Redfield ~ "Morning - Inspiration Point"
"I see some parallels in what Great Granddad had encountered in Pennsylvania to what I've found here, living in Portuguese Bend. With so little open spaces left in Southern California, it's truly a privilege to live in an area of such extraordinary beauty and paint it any way I see fit."



Kevin Prince ~ "Twilight Moon"
"Painting in Portuguese Bend affords me the opportunity to express what I feel while standing in the beauty of its open spaces. In turn, I hope that viewers recognize a feeling within themselves that calls on them to respect and preserve this area."

This Fine Art Exhibition and Sale stands to contribute much to the Land Conservancy's Capital Campaign and fulfilling the community's dream. If each resident in this community pledged just \$100, we would all benefit by preserving this beauty for generations to come.

This exhibition will remain open until July 30th during normal Malaga Cove Library hours. For information, please call the Palos Verdes Land Conservancy at (310) 541-7613, the Malaga Cove Library at (310) 377-9584 ext. 550 or the Portuguese Bend Artist Colony at pbartistcolony.com (310) 541-0645.



Amy Sidrane ~ "Memory of a Past Time"
"We, as artists, have the opportunity to be one of the voices for the land, to call attention to its beauty and the need for its preservation."