

## UPCOMING SHOW

Up to 30 works

May 14-June 11, 2011

K. Nathan Gallery

7723 Fay Avenue

La Jolla, CA 92037

(858) 459-3490

SHOW LOCATION LA JOLLA, CA



# TONY PETERS

## Falling into the figure

In Tony Peters' new painting, *The Fall*, a young couple leaves a suburban background and heads off into nature, a path that is somewhat blocked by a coiled snake on the ground and a large shrub directly in front of them. The painting, for Peters, is brimming with symbolic meaning, not the least of which has to do with Peters' new painting style.

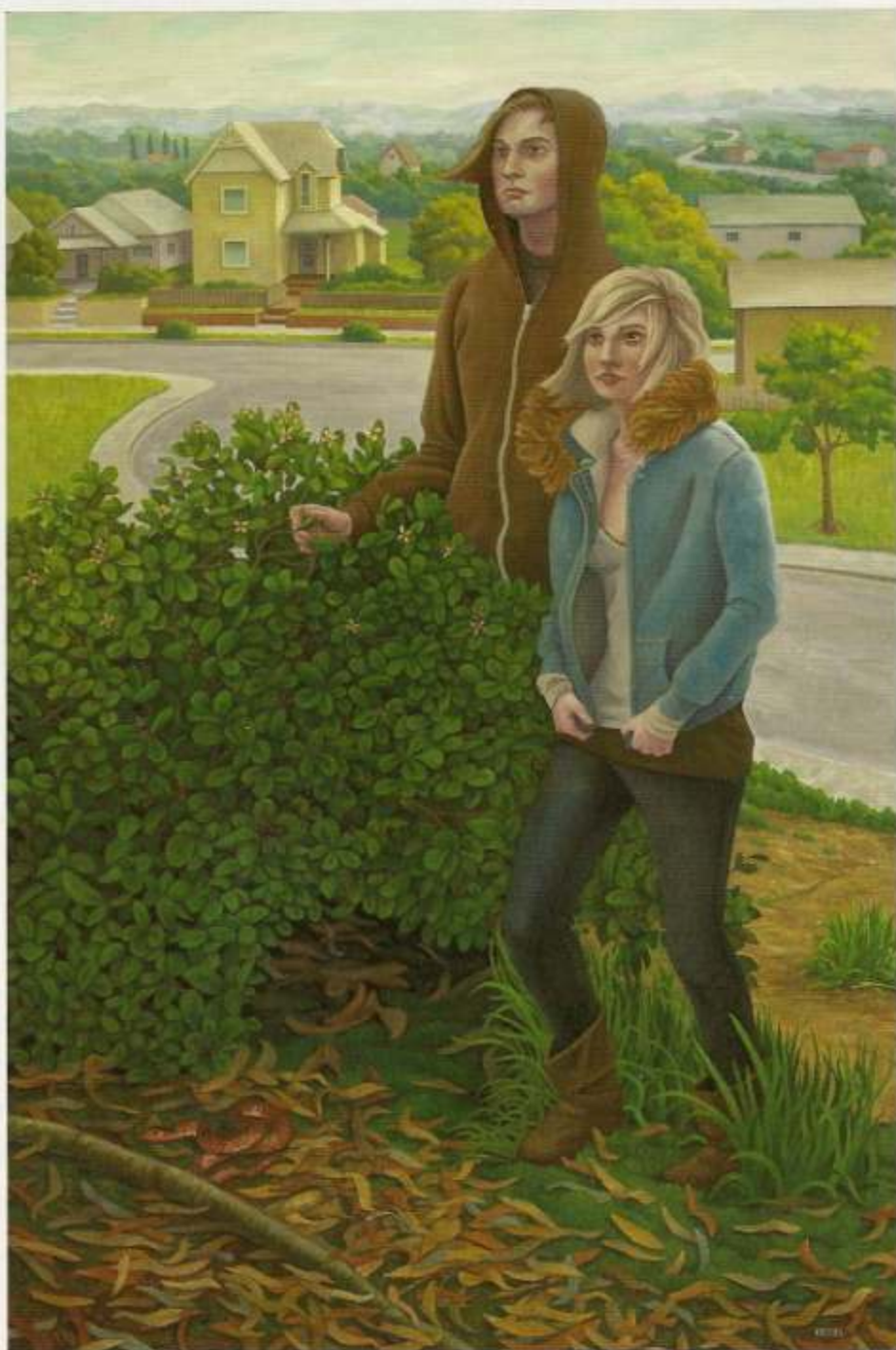
"I have been doing urban landscapes for the first part of my career," says Peters. "But in this new show I'm doing a lot of figures. There is a figure in every one of these new paintings. As I'm concentrating on the figure, my work is leaving the urban landscapes of the past and going into nature, becoming more organic."

The switch has been challenging for Peters, but he is always one to welcome a new direction in his work. The addition of the figure began about a year ago when Peters did a painting of himself staring through the windows of an empty diner.

"There has definitely been a learning curve," says Peters. "I always went to figure painting workshops and practiced my figure drawing, but I never figured out a way to make it work in my paintings, to make it look right."

From his previous work, Peters learned how to set an appropriate scene while hinting at narrative possibilities at the same time. In this new show, Peters takes this one step further.

"I felt that while before I was setting the scene and the stage, now I'm introducing the actors," explains Peters. "Beyond this work being a technical challenge, it is about creating a psychological drama as well. I want people asking 'What is this person doing there?' 'How do they relate to the scene?' It adds a whole new level of enjoyment to the work." ●



THE FALL, OIL ON CANVAS, 54 X 36"

For a direct link to the exhibiting gallery go to

[www.americanartcollector.com](http://www.americanartcollector.com)



BUICK CONVERTIBLE, SAN DIEGO FREEWAY, OIL ON CANVAS, 16 X 41"



GRAFFITI BRIDGE, OIL ON CANVAS, 18 X 24"

### *The Gallery Says . . .*

"Tony has joined an elite group of American artists painting impressions of our urban environment. Southern California is an especially fertile ground for harvesting psychological reflections of city life."

— Keith N. Kelman, Owner, K. Nathan Gallery

### Price Range Indicator

*Our at-a-glance Price Range Indicator shows what you can expect to pay for this artist's work.*

	Small	Medium	Large
2011	\$1,500	\$6,500	\$20,000