



AMERICAN LEGACY FINE ARTS

Representing the Finest in American Contemporary-Traditional and Historic Art



EARLY CALIFORNIA MASTERS:
Paintings from the Katherine A. Norris Legacy Collection

NOVEMBER 12 - DECEMBER 19, 2021

EARLY CALIFORNIA MASTERS: *Paintings from the Katherine A. Norris Legacy Collection*

WE ARE THANKFUL FOR THE FORESIGHT OF ART ENTHUSIAST KATHERINE A. NORRIS (1958–2011) in assembling this collection of exemplary paintings created by premiere masters of Plein Air Painting and California Impressionism. It is an honor that American Legacy Fine Arts was chosen to exhibit and represent the collection.

The works were selected with care to exemplify the unique style and subjects that best embody the oeuvre of each artist in the collection. Some of the artwork was represented through the private Newport Beach art gallery, Katherine Norris Fine Art, while others were retained for Mrs. Norris' own personal collection. While the subject matters differ, the three main criteria for the collection are that the artwork should represent a sense of discovery, convey tranquility, and be created by a California-resident artist.

There is something special about California that has an international mystique. Several years ago, while traveling through Italy with my husband, Peter, we stopped for lunch in a small cafe perched on a hilltop in a Tuscan village. There was a long table of a dozen men sitting together and they were curious about us, the strangers. They asked where we came from. We responded "California." They smiled and nodded to each other with dreamy gazes. One of them replied with his Italian-English, "Ahh, Calee-fornya is like a Ferrari to an Italian." I realized then how special California is.

Certainly, there is a spirit about California that inspires the senses, stirs the imagination and conjures romance, independence, fortune and adventure for all newcomers. This was particularly true at the turn of the 20th century, when countless artists were lured from the cold climes of the Midwest and East Coast to discover the year-round sunshine and magnificent vistas of the Golden State.

Academically-trained artists were hired by the railroads to

paint scenes of the west and southwest for promotional purposes. The picturesque images were reproduced on menus, calendars and magazines in a brilliant subliminal commercial effort to entice easterners to travel west by railway.

In 1920, the Santa Fe Railway hired Sam Hyde Harris. His palette of reds, yellows, and blues was perfectly compatible with the colors of the desert, Native American dress, and the Grand Canyon. The Santa Fe Railway also commissioned Hanson Puthuff to create a series of Grand Canyon paintings that utilized his inimitable atmospheric perspective. Marion Kavanagh Wachtel's poetic landscapes attracted a vice president of the Santa Fe Railway, who commissioned her to paint western scenes in exchange for free passage to California. Similarly, in 1906 Jessie Arms Botke created paintings for the Santa Fe Railroad in exchange for passage to California, where her stylized interpretations became a part of the Arts and Crafts Movement. The Atchison Topeka and Santa Fe Railroad engaged Edgar Payne to paint scenes from Albuquerque to the California coast—images that have become iconic representations of the Southwest.

Some artists who arrived in California were hired by the burgeoning film industry. Western artist Carl Oscar Borg created artwork for both the railroads and movies. He was one of the first art directors in Hollywood and contributed to producing silent films from 1925 to 1928.

Most of the artists represented in this collection had exhibited in the 1915 Panama-Pacific International Exposition in San

Francisco, including Armin Carl Hansen, who won a silver medal, and Maurice Braun, who received a gold medal. When Orrin White's artwork was accepted into the exposition, he quit his job with an interior design company to pursue painting full time. Featured at the 1915-16 Panama-California Exposition in San Diego were paintings by Anna Althea Hills, who won a bronze medal, Jean Mannheim, who received both gold and silver medals, and Jack Wilkinson Smith, who was awarded both bronze and silver medals.

Through the work of these superlative artists, we gain a glimpse of their lives and interests. Many of the paintings were created *en plein air* or from plein air sketches and represent California in its developing years. The Katherine A. Norris Legacy Collection can be considered a body of rare paintings that represent a special time in California history and art.

ELAINE ADAMS

Director

American Legacy Fine Arts



Orrin Augustine White (1883–1969)

Untitled – Mountain Landscape (possibly San Jacinto Peak), c. 1930

Oil on canvas 20" × 24"

Framed 27" × 31"

EARLY CALIFORNIA MASTERS:

Paintings from the Katherine A. Norris Legacy Collection

Featuring:

Carl Oscar Borg (1879–1947) ■ Jessie Hazel Arms Botke (1883–1971) ■ Maurice Braun (1877–1941)
 Julius Maximilian Delbos (1879–1970) ■ John Marshall Gamble (1863–1957) ■ Armin Carl Hansen (1886–1957)
 Samuel Hyde Harris (1889–1977) ■ Anna Althea Hills (1882–1930) ■ Jean Mannheim (1863–1945)
 Alfred Richard Mitchell (1888–1972) ■ Philip Herschel Paradise (1905–1997) ■ Edgar Alwin Payne (1883–1947)
 Hanson Duvall Puthuff (1875–1972) ■ Fred Grayson Sayre (1879–1939) ■ Jack Wilkinson Smith (1873–1949)
 Marion Ida Kavanagh Wachtel (1876–1954) ■ Orrin Augustine White (1883–1969)

ON THE COVER:

Edgar Alwin Payne (1883–1947)

High in the Sierras, c. 1921

Oil on canvas 34" × 34"

Framed 43" × 43"



Carl Oscar Borg (1879–1947)
The Hacienda, c. 1921
 Watercolor 14.25" × 21.75"
 Framed 25" × 34"



Jessie Hazel Arms Botke (1883–1971)
White Peacock – Spring, c. 1930
 Oil on canvas masonite panel 31.125" × 29.5"
 Framed 40" × 38.5"



Jessie Hazel Arms Botke (1883–1971)
Untitled – Three Swans, c. 1920–1930
 Oil on panel with gold leaf 6.875" × 9"
 Framed 12" × 14.5"



Maurice Braun (1877–1941)
Autumn Colors, c. 1920s
 Oil on canvas 16" × 22"
 Framed 23" × 29"

Julius Maxmillon Delbos
Untitled – Fruit Pickers, c. 1930s
 Oil on canvas 16" × 22"
 Framed 19.5" × 24.25"





John Marshall Gamble (1863–1957)
Untitled – Eucalyptes Landscape, c. 1920s
 Oil on wood panel 6.125" × 9.25"
 Framed 13.38" × 16.5"



Armin Carl Hansen (1886–1957)
Idle Fisher Fleet, c. 1912
 Oil on panel 10" × 12.125"
 Framed 16.38" × 18.75"



Sam Hyde Harris (1889–1977)
Canyon Walls, c. 1920s
 Oil on canvas panel 16" × 12"
 Framed 22" × 18"

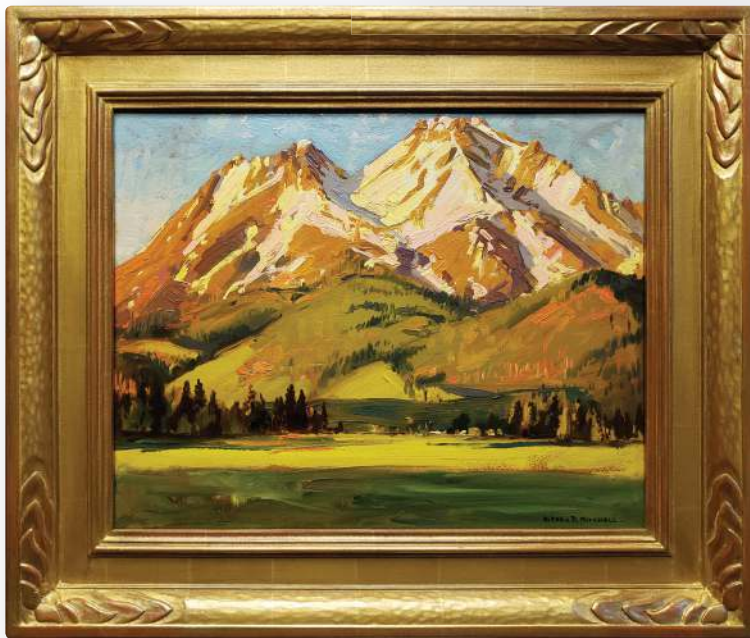


Sam Hyde Harris (1889–1977)
Arroyo Grove, c. 1940s
 Oil on panel 16" × 20"
 Framed 24" × 34"



Anna Althea Hills (1882–1930)
Drying Fishing Nets – Huizen, Holland, c. 1911
 Oil on panel 7.375" × 10.5"
 Framed 12.5" × 15.125"

Jean Mannheim (1863–1945)
Pathway to the Church, c. 1915
Oil on canvas 28.25" × 36.5"
Framed 37" x 45"



Alfred Richard Mitchell (1888–1972)
Morning Light, Mt. Shasta, c. 1932
Oil on panel 16" × 20"
Framed 22.5" x 26.5"

Phillip Herschel Paradise (1905–1997)
Port, 1949
 Watercolor 14.5" × 20.75"
 Framed 25" × 32"



Edgar Alwin Payne (1883–1947)
Untitled – Chioggia Boats, c. 1922–1924
 Oil on canvas 12.5" × 14.5"
 Framed 17.75" × 20"



Hanson Duvall Puthuff (1875–1972)
Near La Cañada, c. 1930
 Oil on canvas 18" × 24"
 Framed 25" × 30.5"



Hanson Duvall Puthuff (1875–1972)
Mountain Pines, c. 1930s
 Oil on panel 16" × 12"
 Framed 23" × 19"



Fred Grayson Sayre (1879–1939)
Untitled – Western Landscape, Owens Valley, c. 1925
 Oil on canvas 16" × 20"
 Framed 22.5" × 26.5"

Jack Wilkinson Smith (1873–1949)
Mountain Landscape –
Sierra Nevada, c. 1927
 Oil on panel 20" × 24"
 Framed 27" × 31"



Marion Ida Kavanagh Wachtel (1876–1954)
Untitled (Snow-capped Mountains) –
Grand Teton National Park, c. 1930s
 Oil on panel 15.75" × 19.25"
 Framed 20.75" × 24.5"



AMERICAN LEGACY FINE ARTS, LLC

By Private Appointment

949 Linda Vista Avenue, Pasadena, California 91103

americanlegacyfinearts.com



Presorted
Standard Mail
U.S. Postage

PAID

Los Angeles, CA
Permit #3828

EARLY CALIFORNIA MASTERS:

*Paintings from the
Katherine A. Norris Legacy Collection*

NOVEMBER 12 - DECEMBER 19, 2021



PROGRAM

Saturday, December 4; 2:00 – 3:30 P.M.

Master Sketching Social

Learn from the Early California Masters by sketching from original artworks on display. Instruction provided by ALFA Artists Peter Adams and Nikita Budkov.



Video Conference and In-Person

Private Gallery Appointments Available

Exhibition Published Online November 5

Please call 626.577.7733 for your personal appointment

americanlegacyfinearts.com

ELAINE ADAMS, Director

949 Linda Vista Avenue, Pasadena, California 91103

Address Service Requested